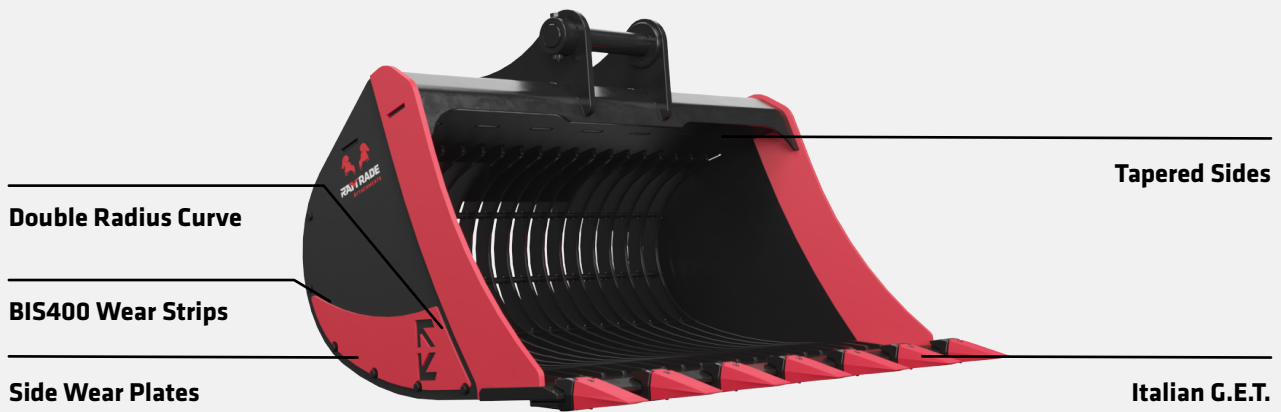


RAMRADE Skeleton Bucket

RAMRADE Skeleton Buckets are highly durable and heavy duty. They have the same profile as general purpose buckets but are built with high tensile bar and ribs (grid), making them ideal for sorting construction materials. Size range from 5 to 37 tonne excavators.



KEY FEATURES

- High strength steel with fully welded interlocked ribs
- BIS400 strips which reduce wear to the base of the bucket
- Aperture spacing between 60-78mm depending on size
- Double radius one allows it to sort quicker
- Side wear plates which help strengthen and extend the life of the bucket

WHAT'S INCLUDED



Standard Pins

	Unit	402015	402018	402020	402022	402025
Pick-Up Dimension	mm	245-172-45	300-200-60/50	385-275-65	458-330-80	509-420-100
Carrier	tonne	4 - 5.9	6 - 9.9	10 - 14.9	18 - 23.9	30 - 36.9
Weight	kg	218	311	520	868	1159
Width	mm	1500	1500	1600	1800	2000
Capacity - Heaped	m3	0.31	0.47	0.81	1.28	1.85
Capacity - Struck	m3	0.22	0.33	0.58	0.92	1.31
Aperture	mm	60	60	61	70	78