



RAMRADE

ATTACHMENTS

Overview

The RAMRADE Grader Blade series offers a tailored solution to levelling jobs, provided by technical research and feedback from extensive testing. The levelling blade is equipped with a bolted double-cut knife built with wear-resistant steel - the blade is reversible and easily replaced. It can be hydraulically displaced to the right or left by 405mm from the central position. The presence of the 4 hydraulic cylinders allows a 34° left and right rotation and a 35° left to right oscillation (tilt) of the levelling blade. Each hydraulic function of the RAMRADE Grader Blade can be controlled manually through the 6 control types available but can be automated when paired with a self-leveling laser system. The grader blade can operate in a hybrid setting which uses the automated self-levelling laser system with a manual override to take control when needed. The unique design and compact frame have 360° rotating wheels supporting the axle to increase structural strength. The control valve inserted inside the frame is protected in a separate compartment which can operate as a proportional control system offering precision performance. The grader blade comes standard with 2 side flaps bolted on the side to fix the laser signal receiver poles. This transforms any skid steer into a high-performance motor grader that produces quality grading through an intuitive control interface.

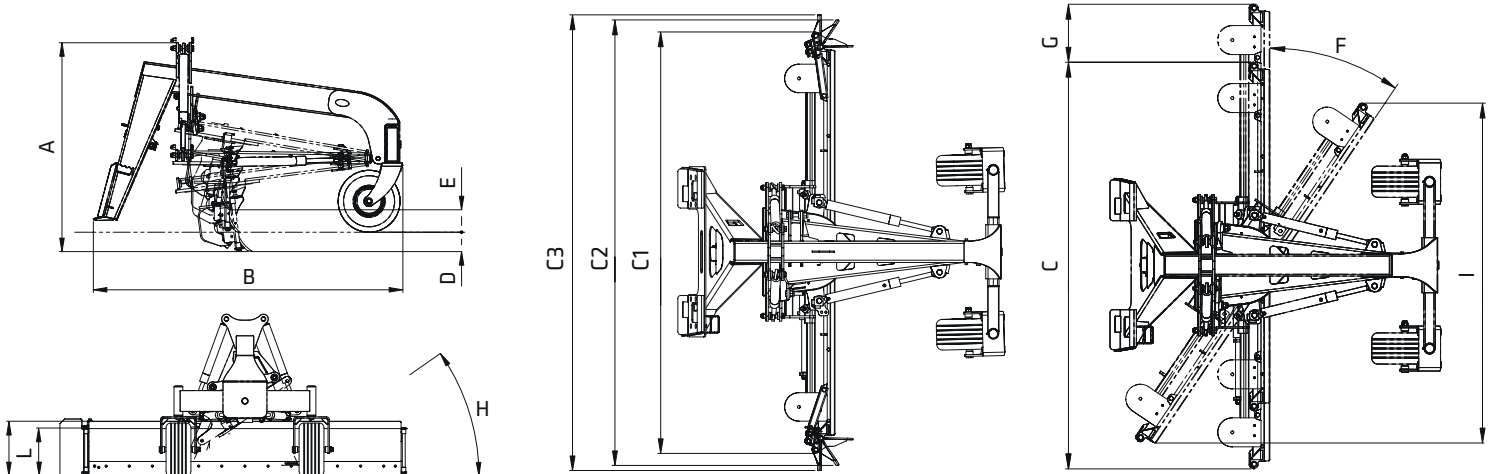
Control System



On/Off or Proportional joystick: When off, the joystick controls provide net movements while the proportional joystick offers more delicate and precise movements. The proportionate drive controls allow the user to move in any direction in response to the movement of the controller. For example, should you move the joystick to the left, the blade will move proportionally to the pressure applied on the joystick.

Technical Specifications

Description	Measurement
A - Height from ground (mm)	1,380
B - Length (mm)	2,280
C - Blade width (mm)	2,400
C1 - Blade width with both flaps* at 0° (mm)	2,650
C2 - Blade width with both flaps at 135° (mm)	2,773
C3 - Blade width with both flaps at 90° (mm)	2,898
D - Maximum blade low (mm)	164
E - Maximum blade lift up (mm)	123
F - Maximum blade angulation (°)	± 34
G - Right/left blade side shift (mm)	±405
H - Maximum blade oscillation (°)	±35
I - Working width with totally angled blade (mm)	2,098
L - Blade height (mm)	414
M - Blade height with top strip (mm)	464
Weight (kg)	730
Oil flow (L/min)	80
Pressure (bar)	170



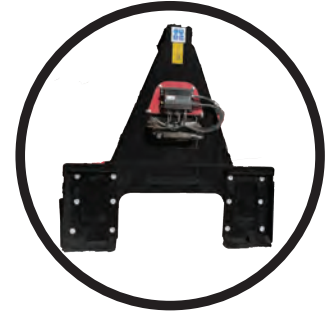
Grader Blade 2400



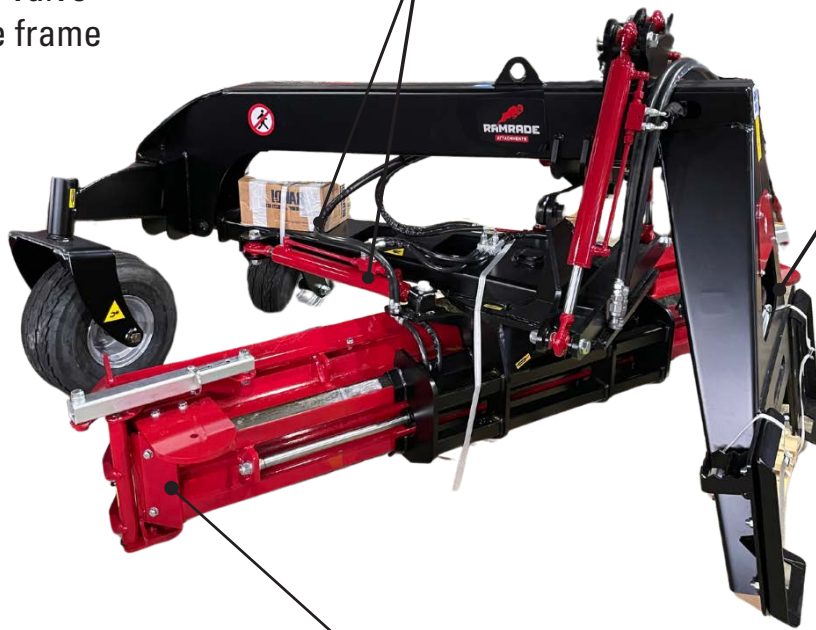
Hydraulic control valve inserted inside the frame



Levelling blade rotation system with double hydraulic cylinder



Linkage plates bolted to the frame



Mechanically set side flaps adjust between 3 different positions to increase blade capacity



Support plates for laser signal receivers to easily bolt on

RAMRADEattachments.com



181 Richmond Rd, Richmond SA 5033

Details, description, and illustrations contained within this specification sheet are intended as a guideline. RAMRADE Attachments reserves the right to make any changes deemed necessary without prior notice.